

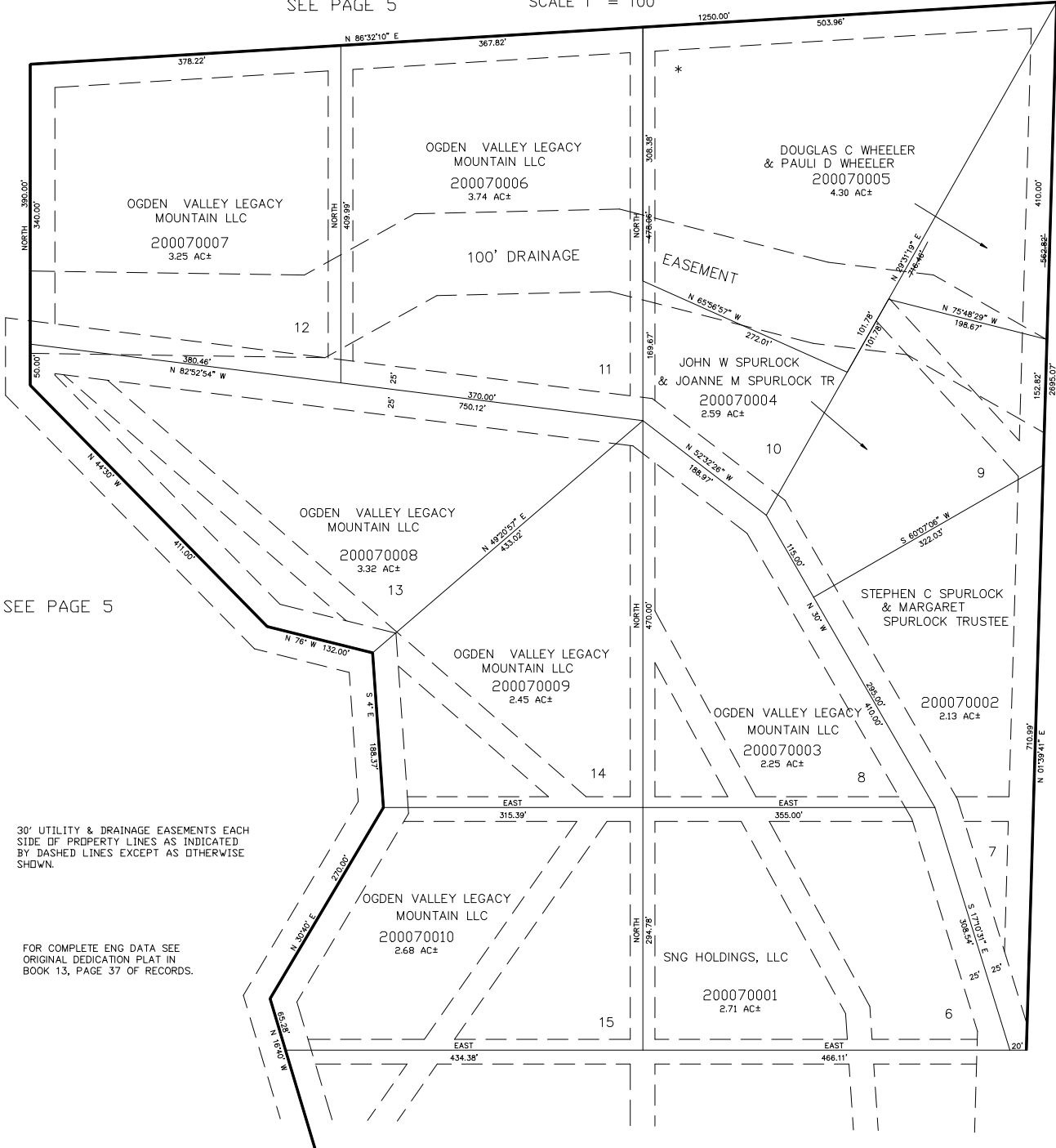
PART OF SECTION 10, T.6N., R.1E., S.L.B. & M.
SPURLOCK SUBDIVISION PLAT 1
PLAT I

TAXING UNIT: 28

SEE PAGE 5

LOTS 6 - 15
 IN WEBER COUNTY
 SCALE 1" = 100'

* UTILITY EASEMENT ON LOT 10
 VACATED 14-OCT-1998
 BK 1962 PG 2724 E.#1581019



SEE PAGE 46

SEE PAGE 5

30' UTILITY & DRAINAGE EASEMENTS EACH SIDE OF PROPERTY LINES AS INDICATED BY DASHED LINES EXCEPT AS OTHERWISE SHOWN.

FOR COMPLETE ENG DATA SEE ORIGINAL DEDICATION PLAT IN BOOK 13, PAGE 37 OF RECORDS.

SEE PAGE 6